

## Stormwater Pollution

Stormwater runoff is one of the greatest threats to water quality in Maryland.

# The CULPRITS



When it rains, water that is not absorbed into the ground, intercepted by vegetation, or evaporated flows into surface waters such as rivers, canals and coastal waters. This flow is called runoff. As the runoff flows over the roads and land, it picks up pollutants.

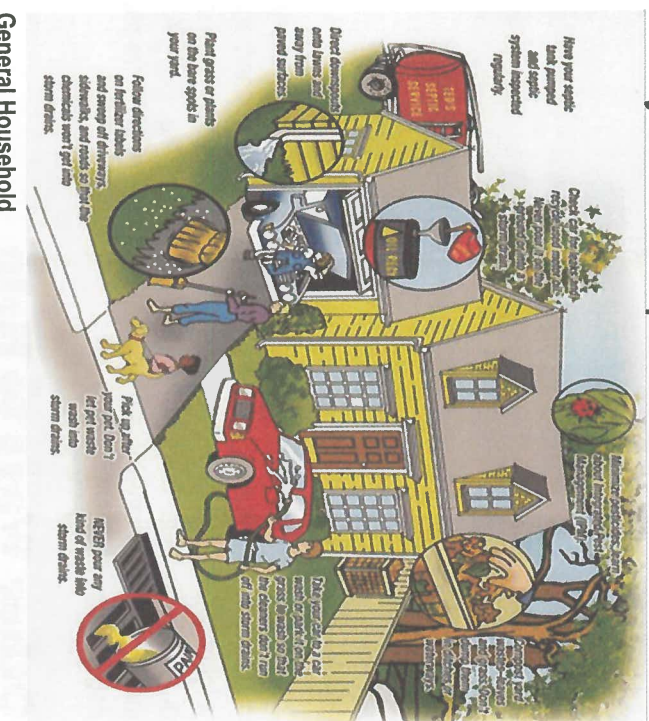
Surface water can be polluted through ground water.



Stormwater runoff is water that does not soak into the ground where it falls. This water runs off yards, streets and parking lots into storm sewers or water ways and carries a variety of pollutants including:

- Illicit discharges
- Fertilizers
- Yard waste
- Paint
- Gasoline/Motor Oil
- Pesticides/Weed Killers
- Pet Wastes
- Detergents and Soaps
- Other pollution/hazardous wastes

## What you can do to prevent Stormwater Pollution



### General Household

Some household products, such as cleaners, insect spray and weed killers, can cause pollution if allowed to drain into a storm sewer.

### Paint & Solvents

Clean water-based paints from rollers, pans and brushes in sinks that go into the sanitary sewer system. Use paint thinner to remove oil-based paint from brushes and rollers but do not rinse down sinks or drains.

### Automotive

Keep your autos in good repair and watch for possible leaks. Take leftover or used fluids to a household hazardous waste collection. Clean up leaks and spills with an absorbent material such as kitty litter. When washing your car use a commercial carwash or, if you do wash your car at home, wash it on the lawn instead of in the driveway.

### Swimming Pool and Spa

Water containing chlorine is harmful to aquatic life. Swimming pool or Spa water can be discharge into the public sewer (sanitary sewer) collection system using the following guidelines:

- Plan discharge for low-use times of sewer flow such as afternoon or late night.

### Lawn and Garden

Follow directions carefully when using pesticides and fertilizers; don't over water or use before a rain. Pesticides and fertilizers adversely impact water quality and aquatic habitat. Mow grass high and let clippings lie.

### Pet Care

Pick-up pet waste as soon as possible and put it in the trash. Pet waste has harmful bacteria that can get into our waterways.

## Dispose of Waste Properly

### Oil & Antifreeze

Used automotive fluids can be returned to an auto parts shop or at the Town recycling center located at:

**Town of Bel Air Planning & Public Works**  
 705 Churchville Road  
 Bel Air, Maryland 21014  
 (410) 638-4536

### Latex Paints

Wet Paint can be recycled at the Harford Waste Disposal Center. If the paint is dried out completely it can be disposed of in your household trash.

### Oil based & Non-latex paints, and non-recyclable items:

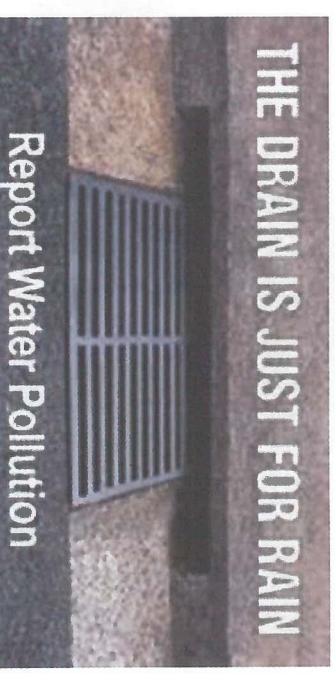
These items can be disposed of during Harford County Hazardous Waste Collection Events. Visit the Household Hazardous Waste page or contact The Office of Recycling at 410-638-3417 for more information.

### Car and Small Batteries

Used car batteries should be taken to your local auto parts stores for recycling. Small batteries such as AA,AAA,D,C etc., can be taken for recycling to your local electronic stores.

### Protect Your Storm Drain

Water in storm drains does not go to the water treatment plant! Pollutants entering storm drains end up in our canals and coastal waters. Maintain a "fertilizer-free" zone around all storm drains and be sure that pet waste and yard clippings near storm drains are picked up and disposed of properly.



## What is an Illicit Discharge?

An illicit discharge is defined as "... any direct or indirect non-stormwater discharge to the Town's storm drain system, except as expressly allowed by this chapter." Examples of illicit discharges include (but are not limited to) the following:

- Disposal of vehicle maintenance fluids into a storm drain;
- Hosing or washing loading areas in the vicinity of storm drain inlets;
- Leaking dumpsters flowing into a storm drain inlet;
- Old and damaged sanitary sewer line leaking fluids into a cracked or damaged storm sewer line;
- Pouring paints or stains into a storm drain;
- Allowing wash water with soaps or detergents into a storm drain inlet;
- Washing silt, sediment, concrete or gravel into a storm drain; and
- A measurable flow during dry weather that contains pollutants or pathogens.



## To Report an Illicit

### Discharge

### Call The

### Town of Bel Air

### Public Works Department

**410-638-4536**

The Town needs your help reporting illicit discharges. Actions we take in our homes and yards can affect our waters and our wildlife. Storm drains from our neighborhood streets end up in our streams and eventually to the Chesapeake Bay. As individuals collectively, we can protect Maryland's fragile estuaries and wildlife.

## Other Ways to Help

### Green Products

The Town offers rebates on green products such as rain barrels and compost bins. Visit the Town website for more information [www.belairmd.org](http://www.belairmd.org) or call 410-638-4540 for more information.

### Stream Clean Ups

Every year the Town partners with a local business or organization to do local stream clean ups. If you have a church group, business, school or organization that would be interested in a stream cleanup project, please contact Charlie Dawson at 410-638-4536 [cdawson@belairmd.org](mailto:cdawson@belairmd.org).

### Storm Drain Stenciling Program

The Town has over 1000 inlets and storm drains. If you have a student or scout in need of a project, storm drain stenciling is a great environmental project. Please contact Charlie Dawson at 410-638-4536 [cdawson@belairmd.org](mailto:cdawson@belairmd.org) for more information.

Town of Bel Air  
Department of Public Works  
410-638-4536

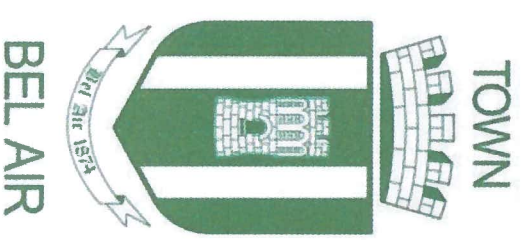
## STORMWATER POLLUTION



## ILLICIT DISCHARGES

## WHAT ARE THEY AND

## HOW CAN YOU HELP



### A Homeowners Guide to:

- Stormwater Pollution
- What you can do to help
- Disposing of Waste Properly
- Recognizing Illicit Discharges
- Reporting Illicit Discharges